

BEFORE RUNNING ELITE

Calibrate flight controls connected to the computer's USB ports (if required) from the Windows Control Panel.

RUNNING ELITE FOR THE FIRST TIME

1. Double click the desired program icon on your desktop.
2. Select the aircraft you would like to fly.
3. Select the navigation region where you would like to fly.
4. ELITE conducts a com port scan the first time it is run on a given system. This scan will search for and detect the presence of a USB key, external hardware, or both.
5. If USB port flight controls are detected, a dialog box will come up the first time the software is run on a given system (see Figure A).

If USB port flight controls are NOT detected (or not in use) this dialog box will NOT come up.

The main window on the "Game controller" dialog box displays a list of all flight controls recognized by ELITE. In Figure A, 2 flight controls are listed:

- CH Pro Pedals USB (2)
- CH Flight Sim Yoke USB (3)

The quantity and names of flight controls listed are system dependent and will not necessarily be the same as those shown above.

Select a Main Flight Control (for aileron/elevator) from those listed by highlighting it, then press the Select button under "Main Flight Control." An asterisk will appear next to your selection indicating it will be used as the Main Flight Control Device.

Select Rudder (if equipped) as described above then press the Select button under "Rudder." A plus sign will appear next to your selection indicating it will be used as the Rudder.

Once the Main Flight Control and Rudder have been selected it will be necessary to configure each.

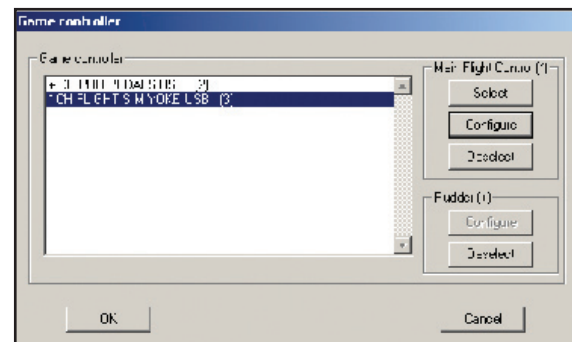


Figure A

Press the Configure button under "Main Flight Control" to bring up dialog box shown in figure B:

The top half of the "Game controller configuration" dialog box is used to assign specific functions to each Main Flight Control axis. The bottom half is used to assign specific functions to Flight Control buttons.

AXIS ASSIGNMENT

Use the horizontal blue axis bars to help identify each axis on your Main Flight Control as applicable. Assign a corresponding function to each axis by selecting it from the drop-down list to the right of each axis bar.

BUTTON ASSIGNMENT

Assign Flight Control button functions by first momentarily pressing the desired button then selecting a Function from the drop-down list under "Settings." Repeat this process (press a button/assign a function) until all desired buttons have been assigned.

Function assignments shown in the graphic are typical for the CH Products three-lever USB Yoke.

Press the Configure button under "Rudder" to bring up the following dialog box:

Use the horizontal blue axis bars to help identify each axis on your Rudder as applicable. Assign a corresponding function to each axis by selecting it from the drop-down list to the right of each axis bar.

Function assignments shown in the graphic are typical for the CH Products USB Rudder.

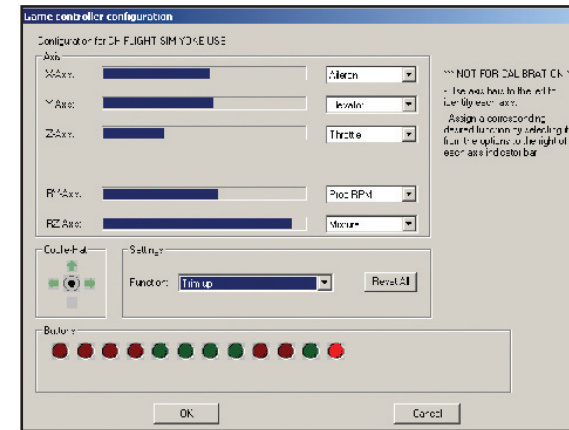
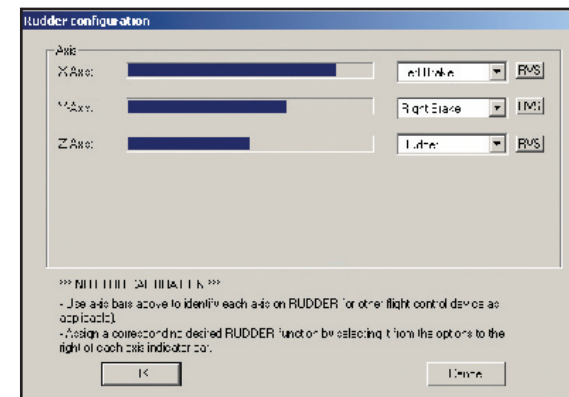


Figure B



INITIAL PROGRAM CONFIGURATION

1. From the INSTRUMENT (cockpit) screen, use the menu at the bottom-right corner to switch to the CONFIGURATION Page.
2. Press SET button under "General Settings" (upper-left corner).
3. Press SET button next to "Set time difference LT (Computer) to UTC." Set time difference between UTC and computer. Example: In Orlando, FL (UTC-5) you would set the Local Time to 07:00 (12:00UTC - 5HRs = 07:00). Press OK button to return to CONFIGURATION Page.
4. Press SET button next to "Calibration" and calibrate flight controls as applicable. Press HELP button for detailed calibration instructions.
5. Quit ELITE (alt-Q).

Calibration does NOT take effect until the next time ELITE is run. Always quit and restart ELITE after calibrating!

6. Restart ELITE. Select Aircraft and Nav region.
7. Switch to the MAP Page using the menu. Press REPOS (reposition) button and select the airport/runway you would like to use as the default and press DEFAULT button. Press TO DEFAULT button to reposition aircraft to the default chosen.
8. Return to the INSTRUMENT Screen, un-Freeze (alt-F) the program, release (click) the Park Brake and you're ready to fly!
9. For more information please refer to the ELITE Operator's Manual on desktop.



QUICK START INSTALLATION GUIDE

MINIMUM v8.0 GenView™ SYSTEM REQUIREMENTS

- Windows 98se/NT4.0/2000/XP
- 1.0 GHz processor
- Floppy & CD-ROM Drives
- 32MB OpenGL accelerated video card
- Sound Blaster compatible sound card
- 1.2 GB Hard Drive space (approximate)
- 2 FREE USB ports for USB key and flight control



USB key

If you are purchasing ELITE for the first time a “WIBU” USB key will be included. Do NOT connect the USB key at this time. The USB key requires software that will be installed with ELITE’s Main Program. Upgrades from previous ELITE versions will NOT include a USB key. If you do not already have a USB key, then simply continue using your UCI box. Please note, however, that the USB key software MUST be installed for ELITE to function, regardless if a USB key is connected or not.



SOFTWARE INSTALLATION

The ELITE v8.0 software is installed in two separate parts. The first is the main program. The second is the GenView™ visual databases. Each part requires its own (unique) set of disks (Floppy/CD) and must be installed in the following order.

Main Program (Part 1)

1. Insert the ELITE Premium v8.0 or ELITE ATD v8.0 Floppy Main Installation Disk FIRST .
2. Insert the ELITE v8.0 CD.
3. After a few moments the CD should “auto-launch” and begin installation.*
4. Follow on-screen instructions to complete installation.
5. Upon successful completion of ELITE’s Main Program the “WIBU” USB key software installation will commence automatically. Follow on-screen instructions to complete installation. Do not cancel this installation! The USB key software MUST be installed even if a USB key is not used.
6. Connect ALL ELITE brand USB hardware to your computer. Connect power to devices requiring external power (avionics panels, flight consoles, etc.)
7. After installation has finished, REMOVE the Floppy and CD installation disks and proceed with GenView™ (part 2) installation.

GenView™ Visual Databases (Part 2)

The following GenView™ US database areas will be installed:

USA Vol 1

- USSE** (United States Southeast)
- USSC** (United States South Central)
- USSW** (United States Southwest)
- USNE** (United States Northwest)
- USNC** (United States North Central)
- UEC** (United States East Central)

USA Vol 2

- USNW** (United States Northwest)
- USAK** (United States Alaska)
- USHI** (United States Hawaii)

1. Insert the ELITE GenView USA v8.0 Floppy Installation Disk FIRST.
2. Insert the GenView USA Vol 1 CD.
3. After a few moments the CD should “auto-launch” and begin installation.*
4. Follow on-screen instructions to complete Vol 1 installation.
5. After installation has finished, REMOVE the Vol 1 CD.
6. Insert the GenView USA Vol 2 CD.
7. After a few moments the CD should “auto-launch” and begin installation.*
8. Follow on-screen instructions to complete Vol 2 installation.
9. After installation has finished, REMOVE the Vol 2 CD and Floppy Installation disks.

* If CD does not auto-launch and begin installation, go to the Windows Start Menu, select RUN and type A:\setup.exe.

DESKTOP ICONS

After installation you should have two ELITE v8.0 Program icons on your desktop as well as several additional ELITE document icons.

The ELITE Premium GV or ELITE BATD GV program icons are used to run ELITE v8.0 with GenView™.

The ELITE Premium or ELITE BATD program icons are used to run ELITE without GenView™.

HARDWARE INSTALLATION

1. Connect USB key to a free USB port. The USB key MUST be connected before running ELITE and remain connected for proper software operation. If you do not have a USB key your current UCI box will remain in use.
2. Connect power to devices requiring external power (avionics panels, flight consoles, etc.) as applicable.
3. Connect flight controls as applicable. If using other than ELITE hardware follow specific manufacturer’s instructions for proper flight control connection and calibration as required.

Thanks for choosing ELITE.

Your satisfaction is very important to us. Please read the following information carefully for proper installation and operation.

